

Asian  
Cultures  
Research  
Institute

ACRI  
Research Paper Series : 3

# Album of Tatar Exiles in Interwar Japan

Edited by  
Nobuo MISAWA



東洋大学アジア文化研究所  
Asian Cultures Research Institute  
TOYO University



東洋大学





本誌は東洋大学・井上円了記念研究助成・研究所プロジェクト  
「近代日本の民族スポーツ形成におけるアジア諸民族の役割」  
(研究拠点：アジア文化研究所，研究代表：石井隆憲教授)  
の研究成果の一環として刊行された。

**This publication is the product of research project,  
“The Roles of the Asian People on the Formation of the Modern Japanese  
Ethnic Sports” (Foothold : ACRI, Leader : Prof.Dr.Takanori ISHII),  
funded by the Research Insititute Project under the INOUE ENRYO Memorial Foundation  
for Promoting Sciences, TOYO University.**



# ACRI

Research Paper Series : 3

## Album of Tatar Exiles in Interwar Japan



Edited by

**Nobuo MISAWA**



東洋大学アジア文化研究所

Asian Cultures Research Institute

TOYO University



First published in Tokyo, JAPAN 2014.

**Copyright © 2014 Asian Cultures Research Institute, TOYO University**

All rights reserved. No part of this book may be used or reproduced in any manner whatsoever without written permission except in the case of brief quotation embodied in critical articles or reviews.

Asian Cultures Research Institute, TOYO University

5-28-20, Hakusan, Bunkyo-ku, Tokyo 112-8606, JAPAN.

Telephone: +81-3-3945-7490

URL: [http://www.toyo.ac.jp/rc/acri/index\\_j.html](http://www.toyo.ac.jp/rc/acri/index_j.html)

Printed by NIMURA Printing

Designed by BRAND CONCEPT

**Nobuo MISAWA (ed.)**  
**Album of Tatar Exiles**  
**in Interwar Japan**  
(ACRI Research Paper Series : 3)  
ISBN:978-4-903878-13-3 C3036 ¥00000 E

※ This book is one of results due to the research project, "The Roles of the Asian People on the Formation of the Modern Japanese Ethnic Sports" (Foothold:ACRI, Leader:Prof.Dr.Takanori ISHII), funded by the Research Institute Project under the INOUE ENRYO Memorial Foundation for Promoting Sciences, TOYO University.



## FORWORD

Nowadays the Tatar exiles in Interwar Japan are very interested in the world-wide scale. Some of academic research projects are promoted in Japan, Turkey, Russia, U.S.A., and so on. But it is too late to start the academic projects. We often encounter various difficulties because a lot of them died. So we need to find and collect various source materials related to them.

For the purpose of the research, we provided the reproduction of the photographic memorial album of *Mekteb-i İslamiye* for the 10th anniversary (1927-1937) under the title: ( طوكيو دا مکتب اسلاميه نك ۱۹۲۷-۱۹۳۷ اون يللو خاطره اوچونسی توزولكنه رسمله ر مجموعه سی ) / 東京回教学校十周年記念写真帖, طوكيو 1937) under the title: *Tokyo Muslim School Album (1927-1937)*, Tokyo : Asian Cultures Research Institute, TOYO University, 2011. Although this album contains various precious photos about the social life of them, it is owned by only the Central Library of WASEDA University among all public libraries in Japan. Because this album was not for sale but was distributed within the circle of Tatar exiles.

Continuingly, with the same purpose, we would like to provide the reproduction of the private album of Tatar exiles in Interwar Japan. During my research sabbatical in Istanbul (2006-2007), I worked to find and collect various source materials (both public document and private documents) about Tatar exiles in Interwar Japan. This album was purchased from one of the secondhand dealers. After the Korean War (1950-1953), some of them decided to immigrate from Japan to Turkey with citizenship presented by Turkish Government. So it is possible to find and encounter the private source materials belonged to them in Turkey.

This album contains very interesting photos. We can find some important figures, such as Kurbangali, Ayaz İshaki, Abdürreşid İbrahim and Kôji ÔKUBO. There are some of postcards printed at *Matbaa-i İslamiye*. Photographing place are Tokyo, Kobe, Harbin and Korea.

Now we are trying to specify the figures and photographic places, with attentions to the privacy, but it will take long time to the research. So first of all, for the academic research, we would like to provide this album as one of the essential source materials about Tatar Exiles in Interwar Japan.

**Nobuo MISAWA**

(Asian Cultures Research Institute, TOYO University)



ایکی صاواش اره سنده  
یاپونیا دا تاتارلر  
رسمله ر مجموعه سی

طوکیو

۲۰۱۴







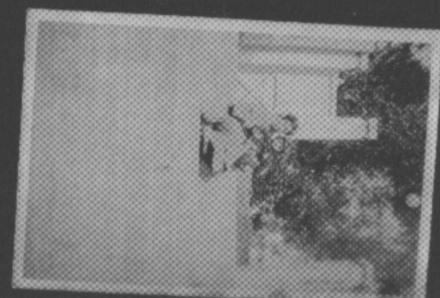
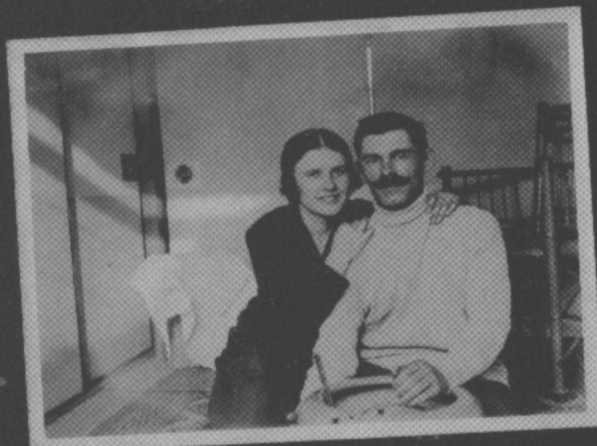


















بایسیدار طوطی مسلمانان بر روی پیشانی ۱۳۲۸ هجری قمری  
 ۱۳۲۸ هجری قمری در سال ۱۳۲۸ هجری قمری



شیخ شعیب عبدالرشید ابراهیم خضر که ری  
 ۱۳۲۸ هجری قمری در سال ۱۳۲۸ هجری قمری



پسندیده طوطی شهرت حمایت اسلامی  
 ۱۳۲۸ هجری قمری در سال ۱۳۲۸ هجری قمری







لَوْ عِلمِي، أَوْلَدْتُ نَوْفًا، نَكَتَ أَنْسِي مَهْ عَدْوَهُ، أَوْ نَقَى نَوَافِي لَوْ

























شیخ زوره  
۱۸ یول آریلند  
۴۴ یول تولدا

شیهاب  
مه زوره تنك  
واماننا  
كوشبو

توقای شیهاب مه زوره توردنا  
حکیمه کی بولسا، نه یتیم بیریم شول شه ب مه زوره ت  
تولعان آی کوک بالقب جققان شیهاب مه زوره شه  
مه عاریفکه نه ووهل باشلاب آدوم سالعان  
سیلله ت نوجن باها بینسه سی قیبات مه زوره شه  
۱۹۱۳ عینوار ۱



پاکا فرلای دا توقایک ساباقا یو کهن مکبیه



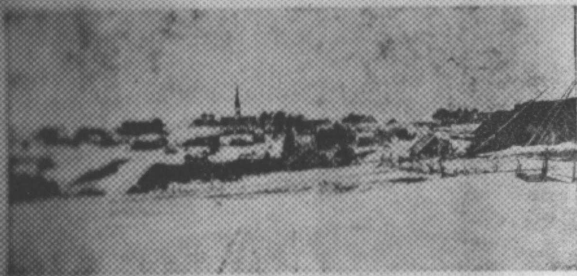
ع توقایک آورو شفا خانه کی رسمی



شیخ زوره توردنا عینوار ۱۹۱۳ عینوار ۱



عینوار ۱۹۱۳



عبدالله افندی توفیق‌خان "موتغان" اولی قوشلاچانک غومور کورخانی



عبدالله افندی توفیق‌خان قرلای اولنده عبدالحمید حشردهن V چن پاشنده ایر بالالار برهمن برکه سبوق اولی باشلانغان مکتب منظره سی .



مرحوم عبدالله افندی توفیق‌خان طوطغان اوی قوشلاچان اولنده عارف‌خان حشردهن یوزلی اوی تونریشیر شوموردهن کورخانی غومور کورخانی



پاکا قرلای اولنده عبدالله افندی توفیق‌خان V چن پاشنده سبوقه کروب قش لرحمن حشرخان اولنده سبوق اولی باشلانغان اوی .



عبدالله تویاچ و تونریشیر برتون دست



ح. تویاچ ۱۶۱۰ سنده اندرغان رسن .







### سوغى كوروش

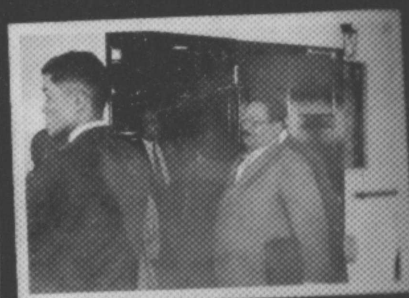
توغاي نيك بالىنىشە كە كروۋى تاتدا خاتىج كە مېرمان بۇش  
 سوزلەردىن يازا: ئېركەك ئېركەك بىلەن بالىنىشە كە ئېلىنلەپ  
 دېگەن ئۆزىنى كۈل مېنىم بىلەن كۈرۈشكە كەلگەن ئېدى. سايلاپ  
 چاراق شاد دۇز بىلەن كۈل - جېن ئېرتەككە كەلگەن كۈرۈم.  
 ھېن كىنكە تۈە سېلى تۇرماغان بولسا... مۇنداق سۆز  
 كۈرۈشكە سەك... موش ئېنىق! دېدى. دوقۇنلار ئۆزى  
 ئېلىنلەپ ئۆزى بولسا، بىلەن كۈرۈشكە كەلگەن ئېدى. موش  
 قانداقلا بولسا، بىلەن كۈرۈشكە كەلگەن ئېدى. موش  
 ئېلىنلەپ بىلگىلى ئېدى. ئالاھىدىلىك ئۆزى - ئېرتەك  
 موش، ئېرتەك شېك! - دېدىم. ئۆزى بولسا، موش بىلەن شاد  
 ئېرتەك، ئېرتەك شېك! - دېدىم. ئۆزى بولسا، موش بىلەن شاد  
 موش بىلەن شاد، موش بىلەن شاد، موش بىلەن شاد.

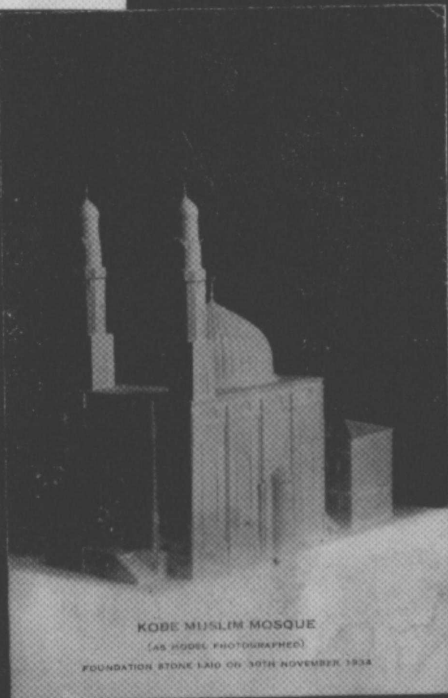




مرحوم عارف کریم 1912 پی یل بالقان صوغشی وقتدا  
تورک اوردوسندا کوکالی عسکر





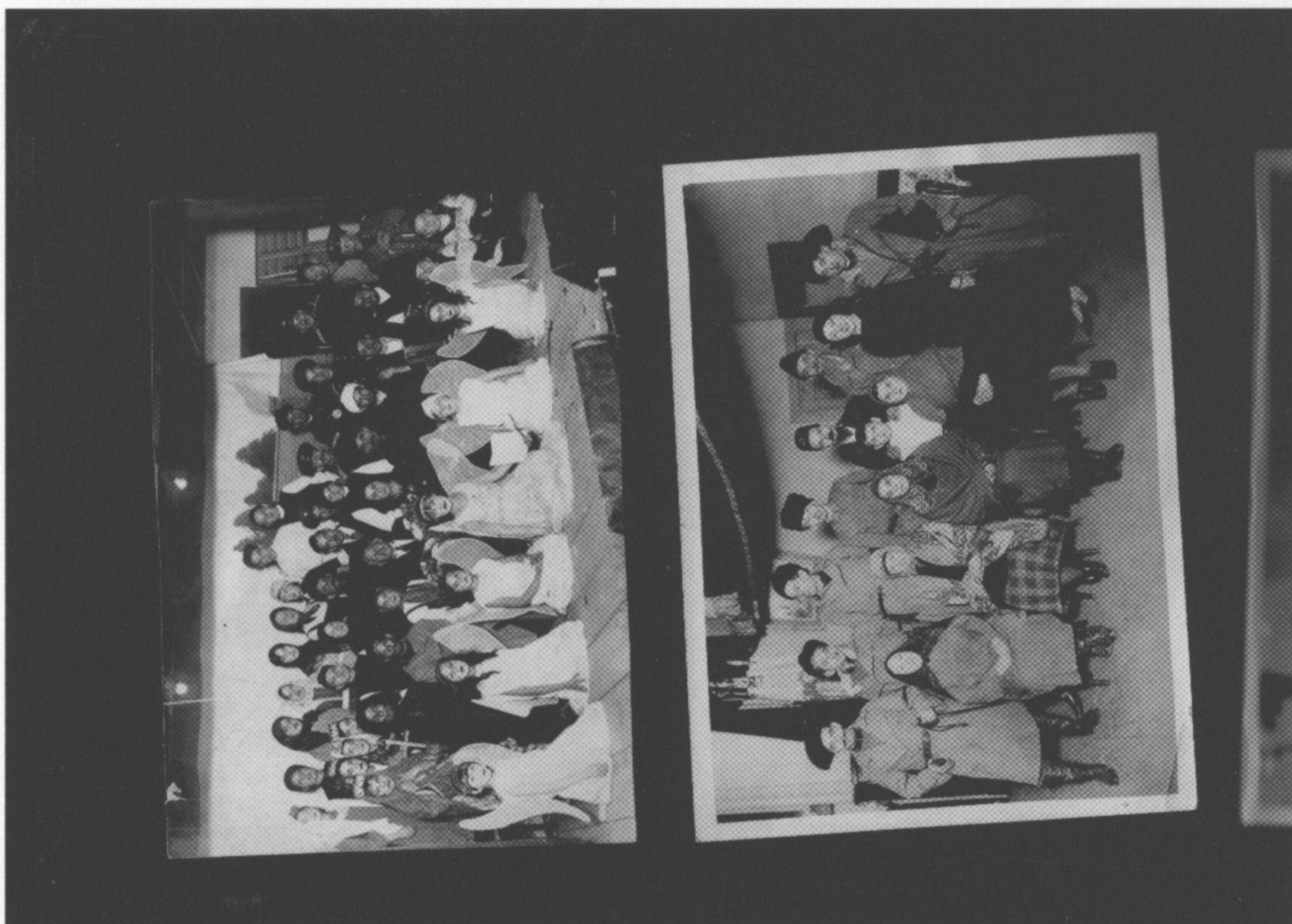
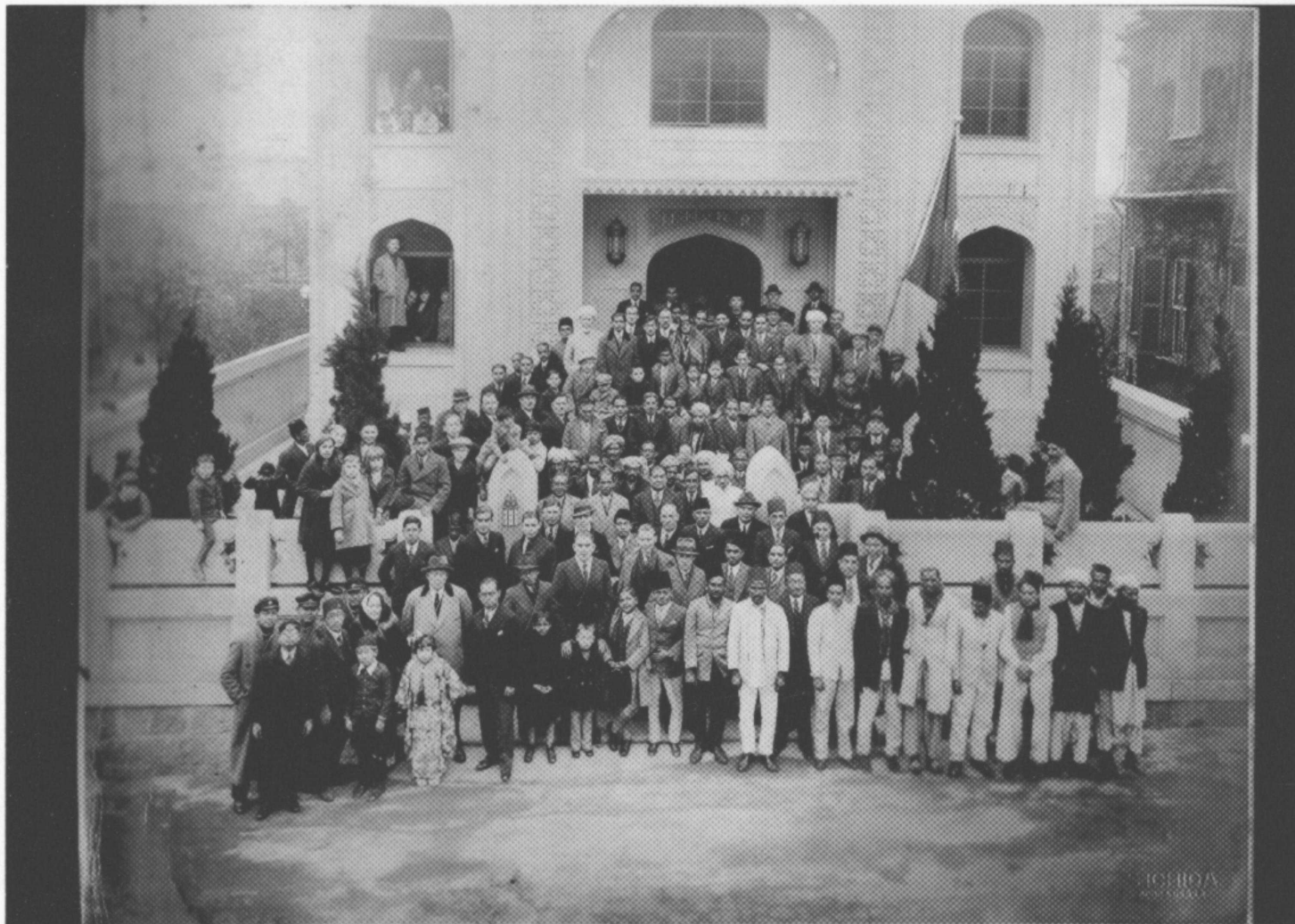


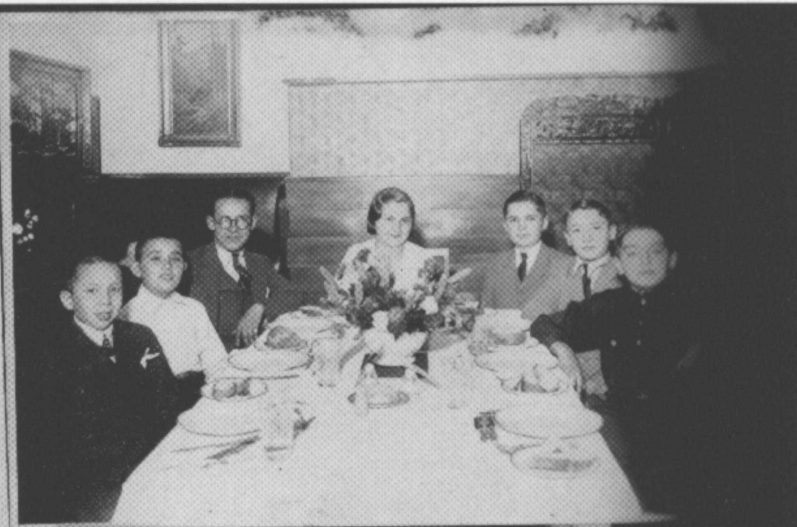










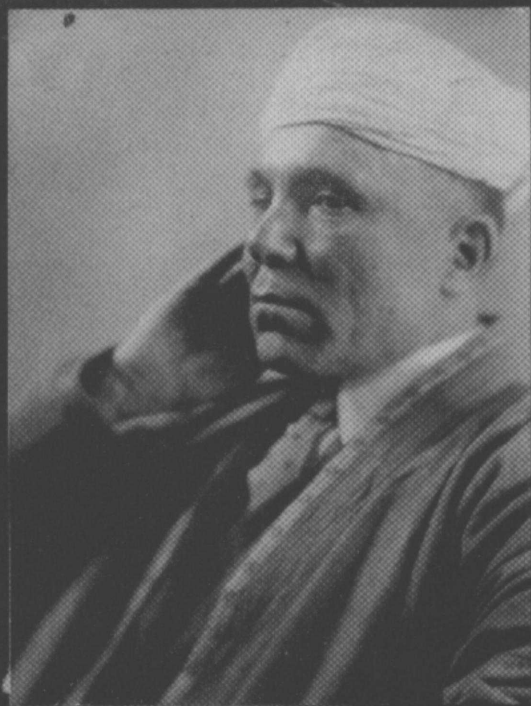


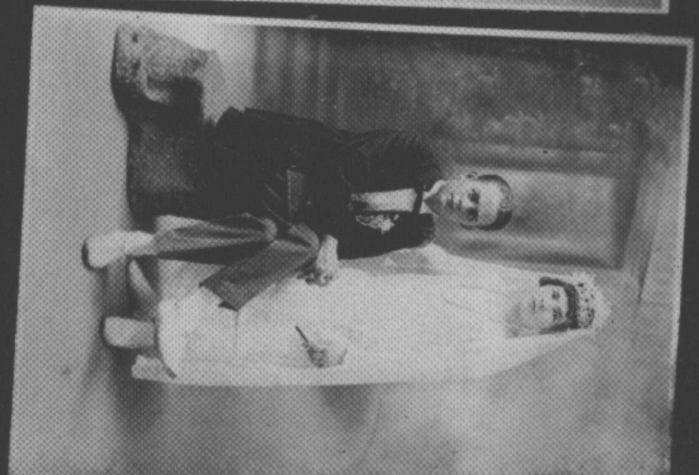
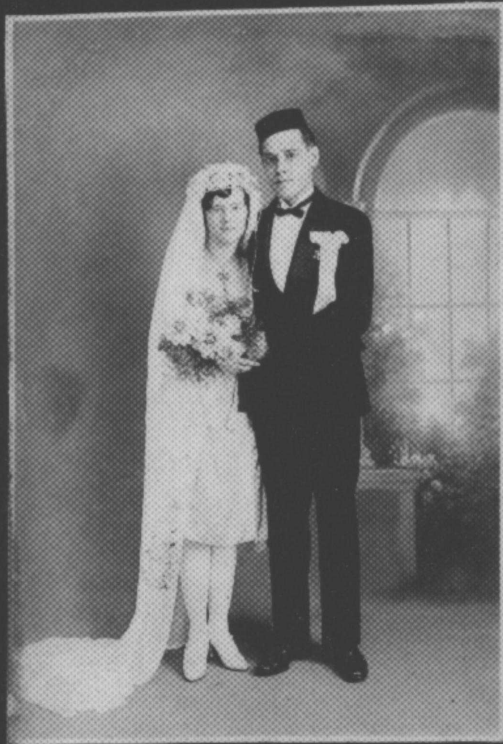




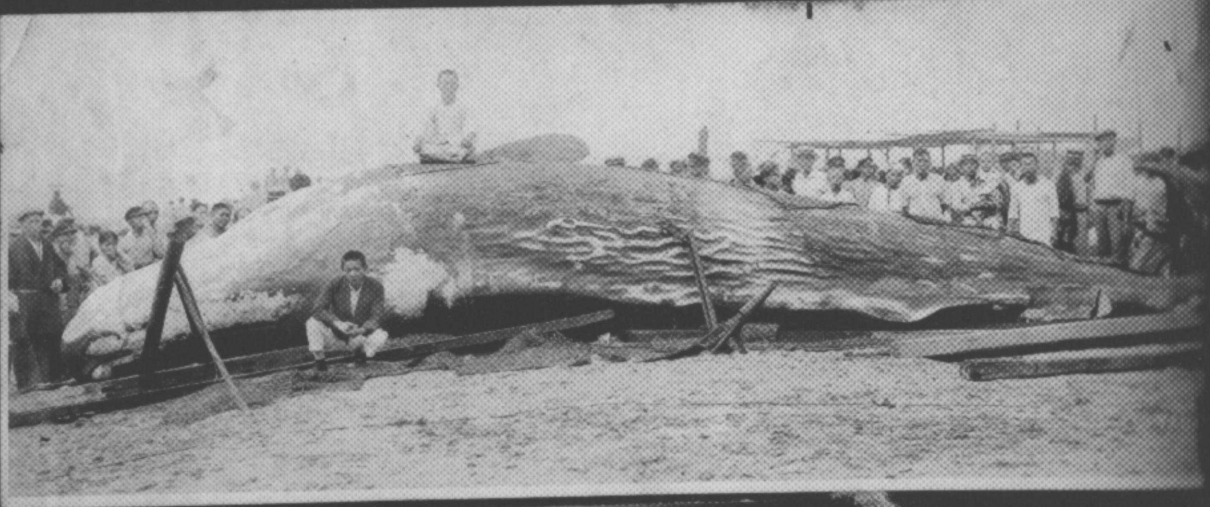
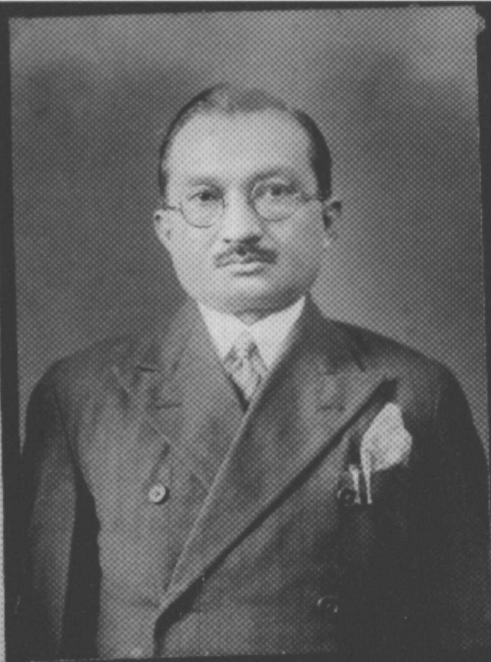


















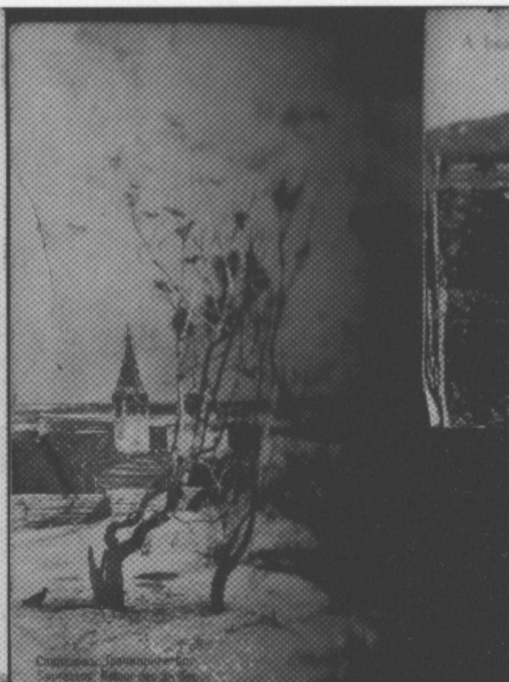
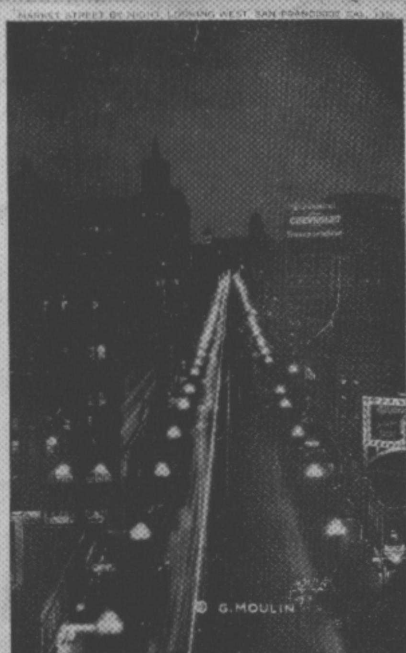
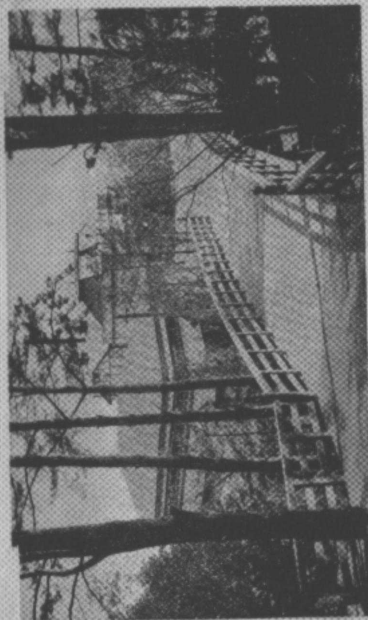




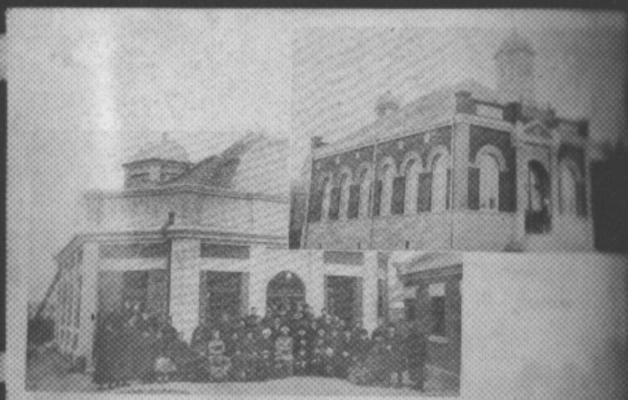




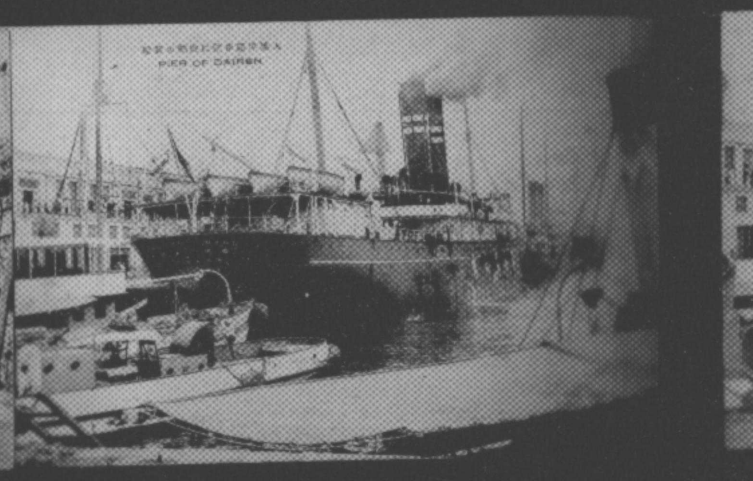
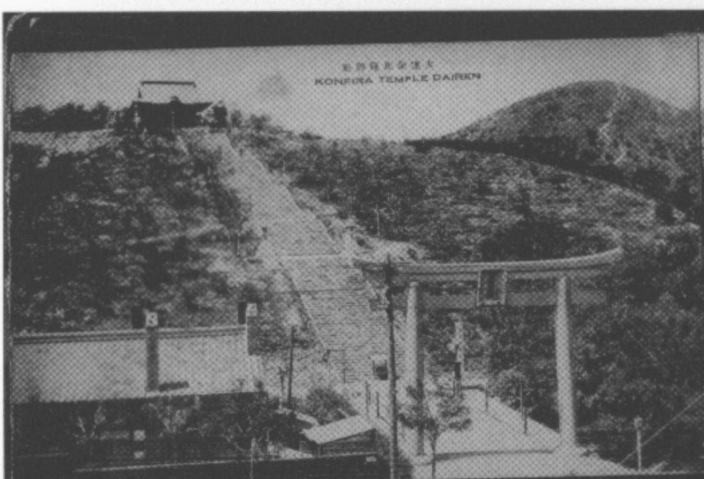
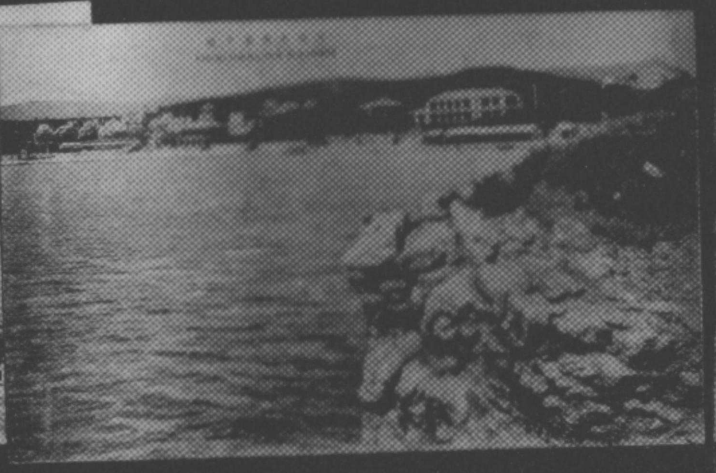


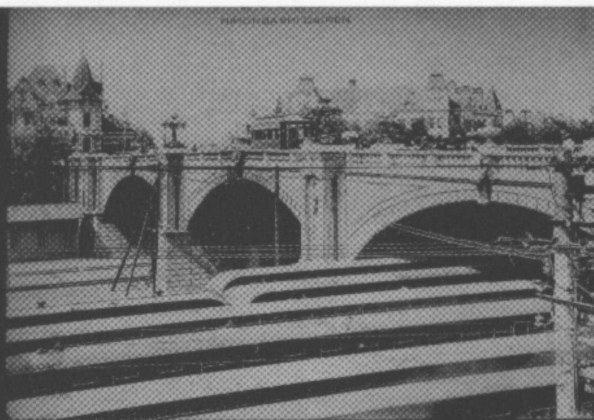


A seasonal view near Hangchow (China)

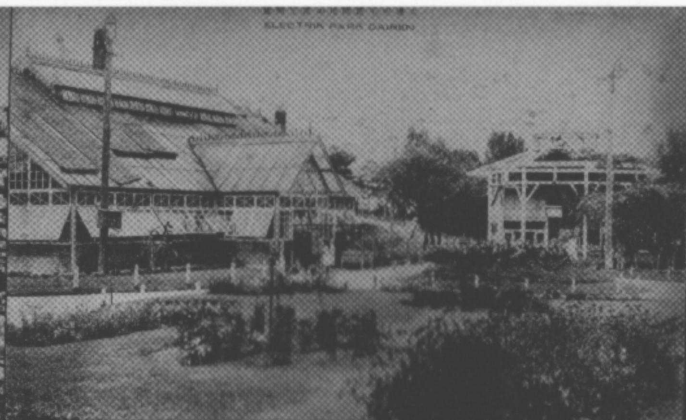








THE BRIDGE OVER THE RIVER



ELECTRA PARK GARDEN



THE SHIP AT THE DOCK



THE STREET IN THE CITY



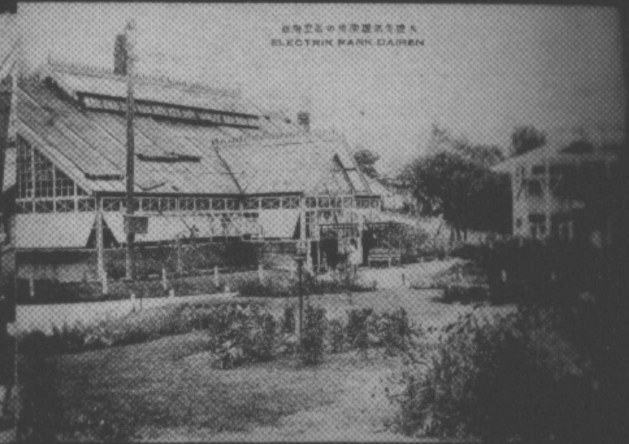
THE STREET IN THE CITY



ELECTRA PARK GARDEN

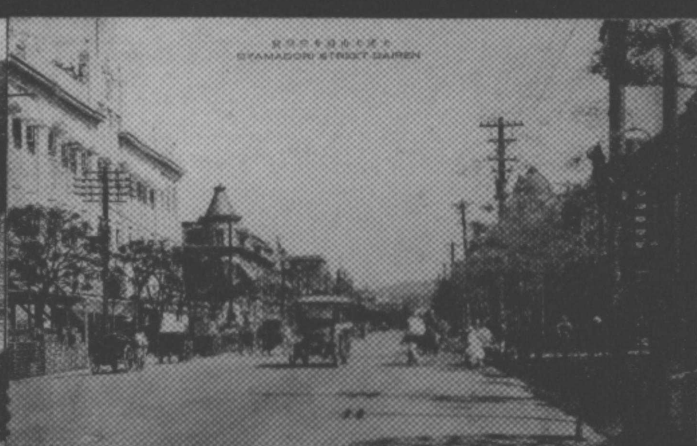
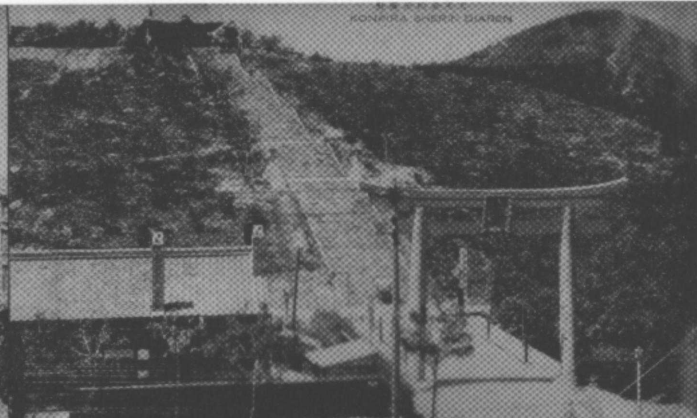
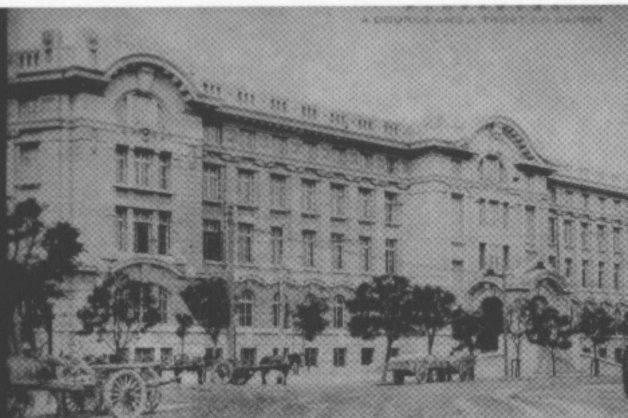


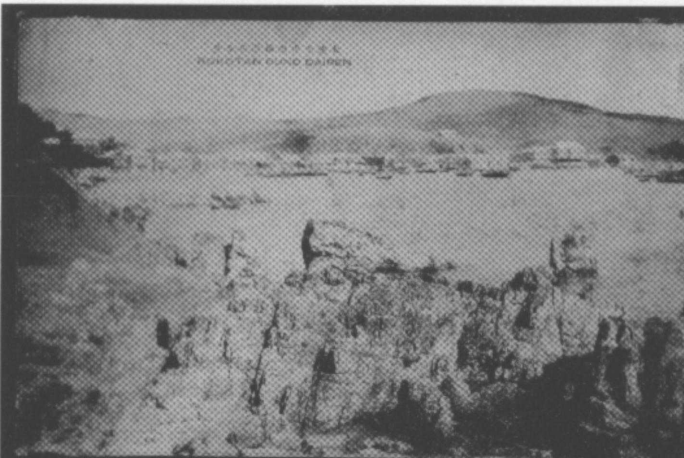
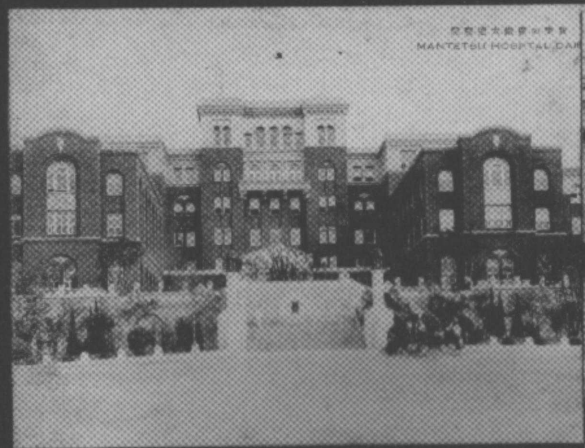
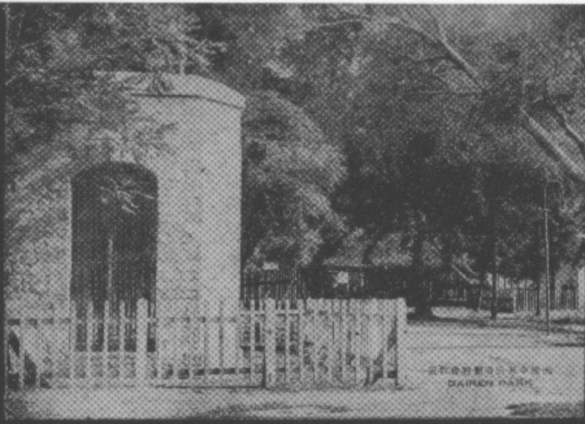
THE STREET IN THE CITY



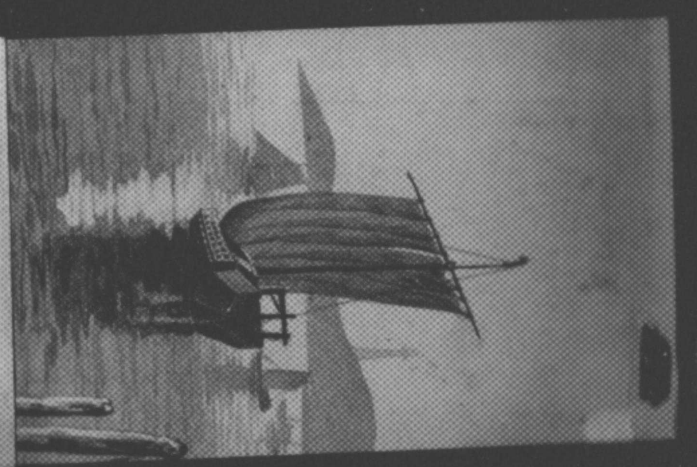
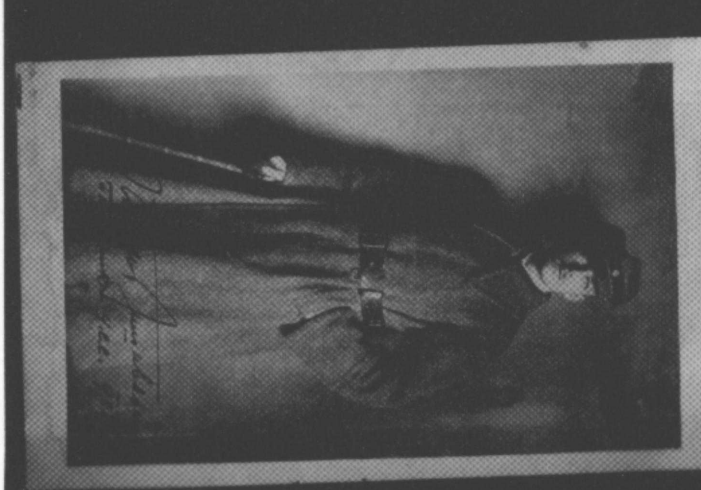
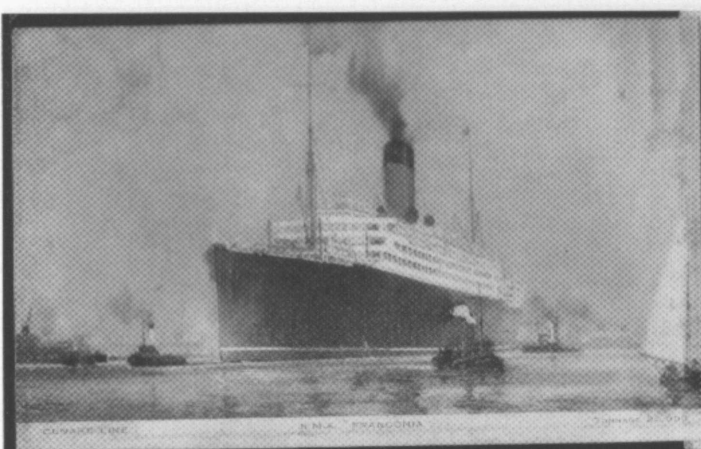
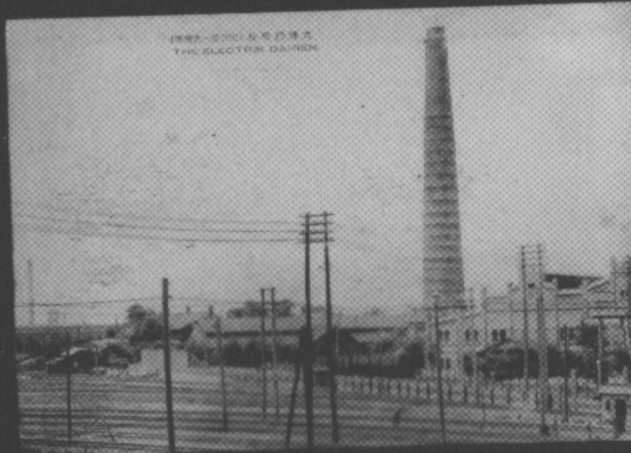
ELECTRA PARK GARDEN

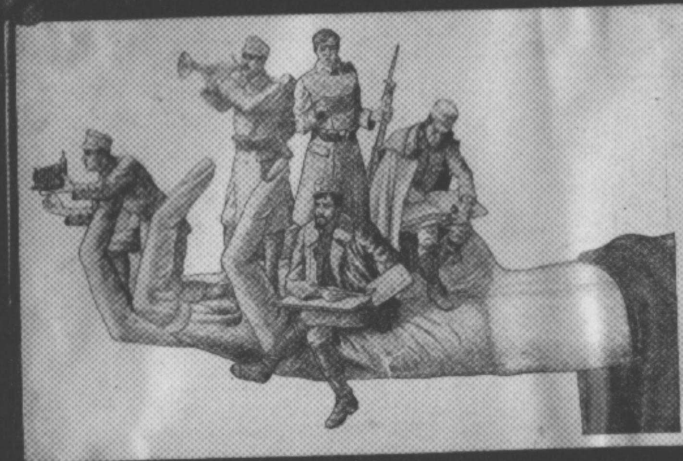
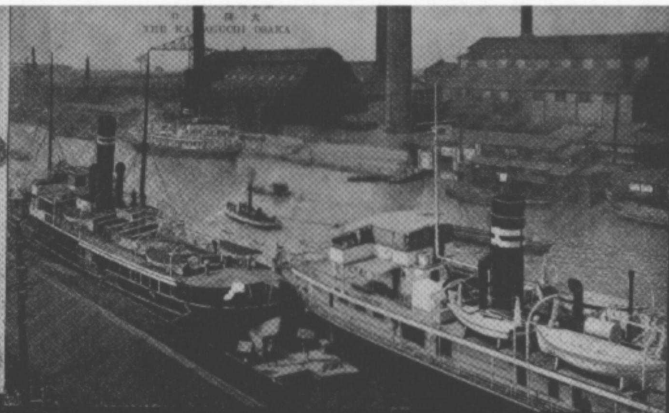
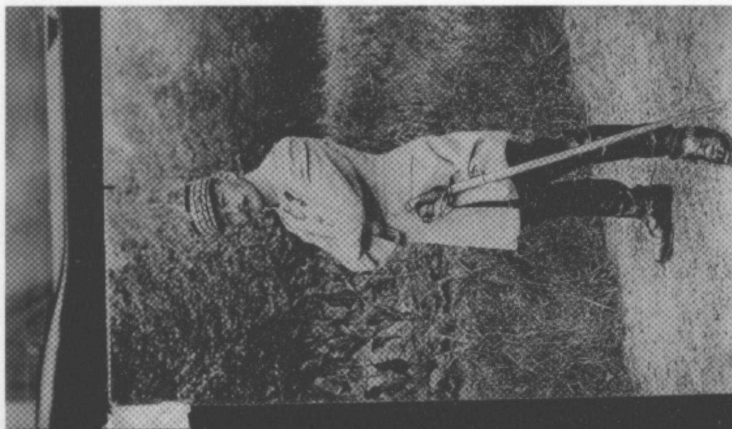












地蔵菩薩像の群像に京東  
 طبریزو اسلام قبرستان





Hibiya park. (Great Tokyo)

國 立 公 園 池 子 (東京市)



Famous Place of Production.

製 全

新 各 島 の 江 州 船



VIEW OF THE FAMOUS PLACE, NO. 1  
Mitsui Bussan Kaisha Building (Famous Place)

(2. 11. 1. 下 横 濱 市 街 の 見 物 所)



Amiya forest of the Hibiya park.

國 立 公 園 池 子



VIEW OF THE FAMOUS PLACE, NO. 2  
Park of the Hibiya park (Famous Place)

(2. 11. 1. 下 横 濱 市 街 の 見 物 所)



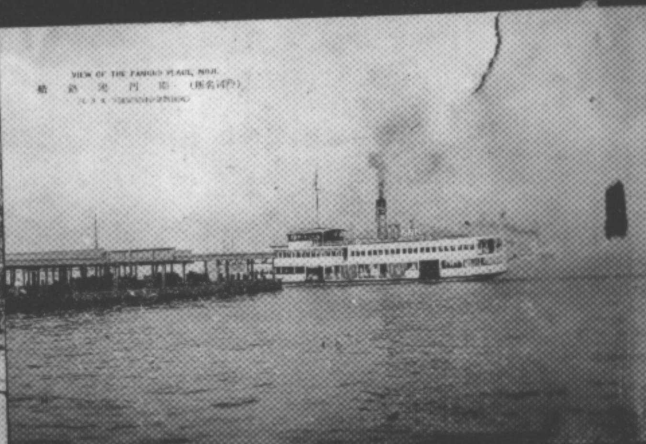
Yokohama Specie Bank (Famous Place)

国 立 公 園 池 子 (東京市)



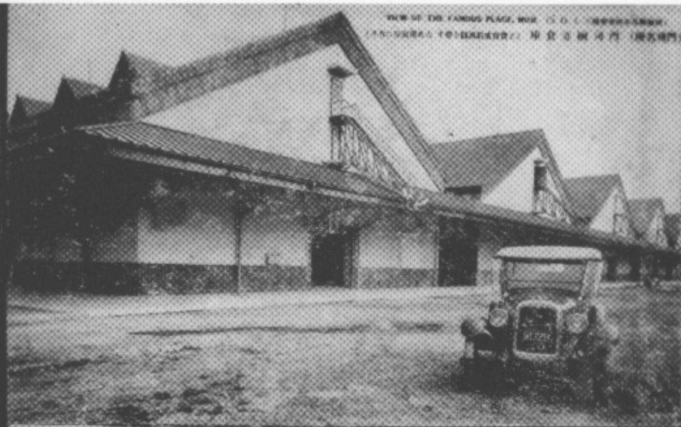
VIEW OF THE FAMOUS PLACE, NO. 3  
Mitsui Bussan Kaisha Building (Famous Place)

(2. 11. 1. 下 横 濱 市 街 の 見 物 所)



VIEW OF THE FAMOUS PLACE, NO. 4  
Mitsui Bussan Kaisha Building (Famous Place)

(2. 11. 1. 下 横 濱 市 街 の 見 物 所)



VIEW OF THE FAMOUS PLACE, MOI. (11.11.11) 廣東省城 (廣州城門)



VIEW OF THE FAMOUS PLACE, MOI. (11.11.11) 廣東省城 (廣州城門)



VIEW OF THE FAMOUS PLACE, MOI. (11.11.11) 廣東省城 (廣州城門)



VIEW OF THE FAMOUS PLACE, MOI. (11.11.11) 廣東省城 (廣州城門)

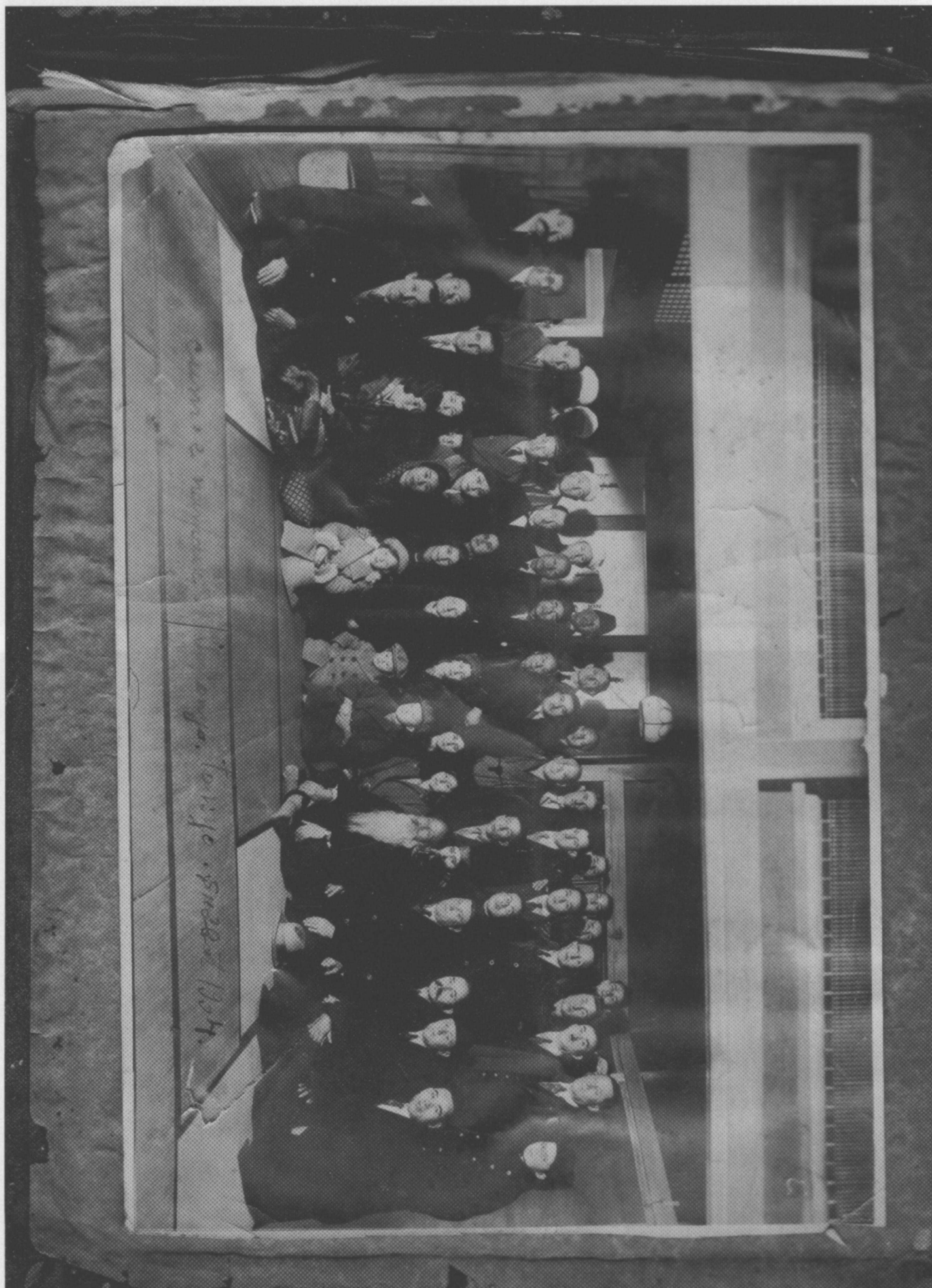


VIEW OF THE FAMOUS PLACE, MOI. (11.11.11) 廣東省城 (廣州城門)











## Asian Culures Research Institute TOYO UNIVERSITY

Asian Cultures Research Institute, TOYO University was founded in 1959 by the name "Asia-Africa Research Institute" for Asia-Africa research. Asia-Africa Cultural Research Institute, Toyo University was inaugurated in 1963, the 40th anniversary of its foundation was celebrated in 1999. The present name was adopted in the year 2002, in line with its new role as a research center for the study of Asian cultures, and we have some 40 research fellows and more than twenty visiting research fellows today.

This institute is a research center of Asia research studies in Toyo University. The research area covers not only the East Asia, China and South Korea, but Southeast and West Asian countries. In the meantime, the institute disseminates the research results as research bulletins, including the academic *Annual Journal* (ISSN 1880-1714).

The laboratory research project was adopted as one of the Academic Frontier Promotion Projects based on accumulation of such a research institute by the Ministry of Education, Culture, Sports, Science and Technology, started at the 2002 fiscal year for five years. This project has the close cooperation with many organizations and the researchers in the Far East and the South-east Asia.

The results of the energetic research are open to the public widely and within the university as well. We have academic lecture meetings, workshops and symposiums. We have also managed "Asia Networking System on Web for Easy Reference (ANSWER)" which is a WEB system, and is exhibited (2002-2010). In the future the members of this institute are moving on to further research with the assistance of the researchers inside and outside of the university. We hope that our institute will play the significant role as one of the main role for the scientific basis of Asian research.

5-28-20 Hakusan, Bunkyo-ku,  
Tokyo 112-8606, JAPAN  
Phone: +81-3-3945-7490

URL: [http://www.toyo.ac.jp/rc/acri/index\\_j.html](http://www.toyo.ac.jp/rc/acri/index_j.html)



ISBN 978-4-903878-13-3  
C3036 ¥00000 E

TOYO  
University



TOYO University Asian Cultures Research Institute

